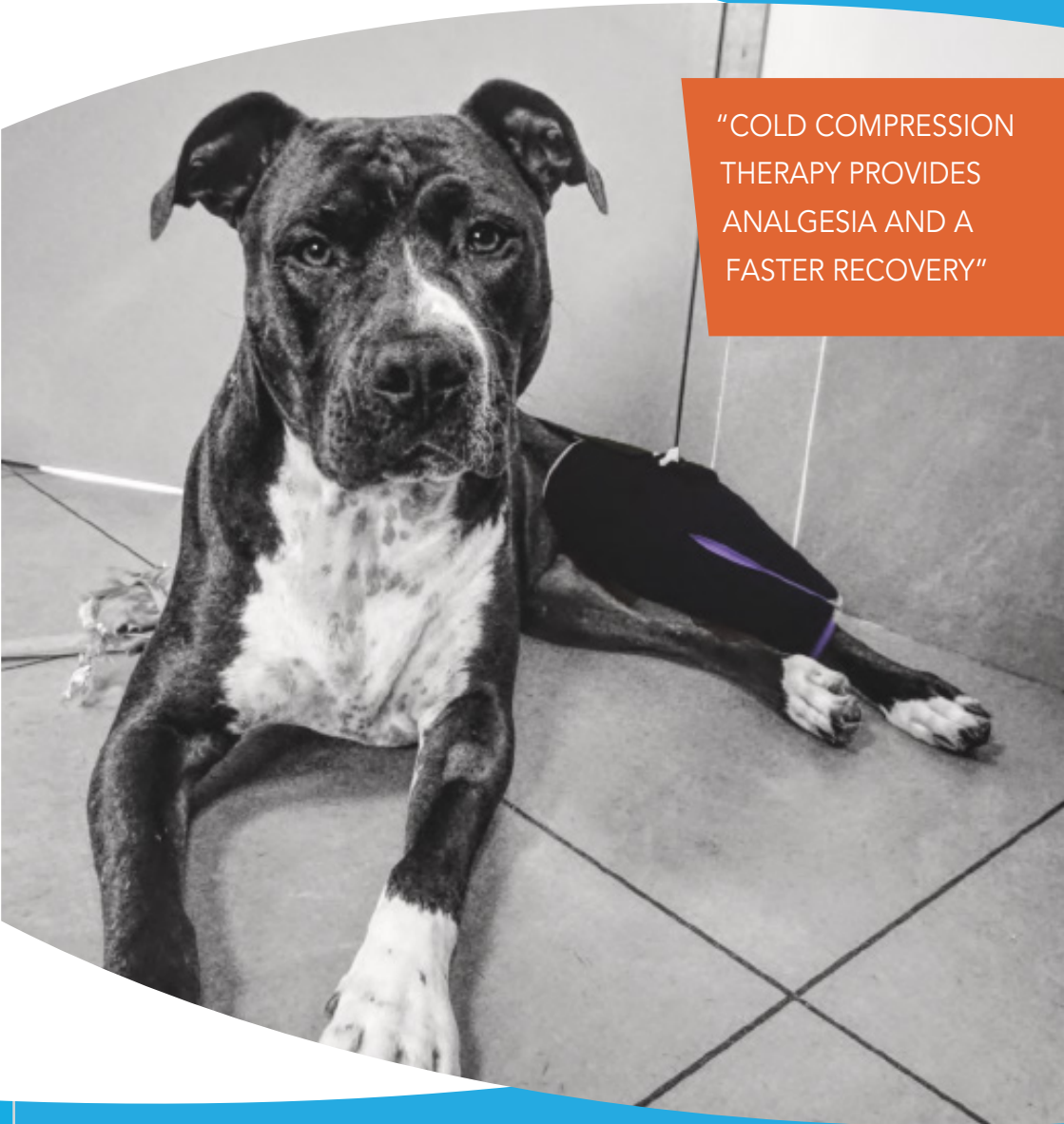


# CRYOTHERAPY BRACE with compression

“COLD COMPRESSION  
THERAPY PROVIDES  
ANALGESIA AND A  
FASTER RECOVERY”

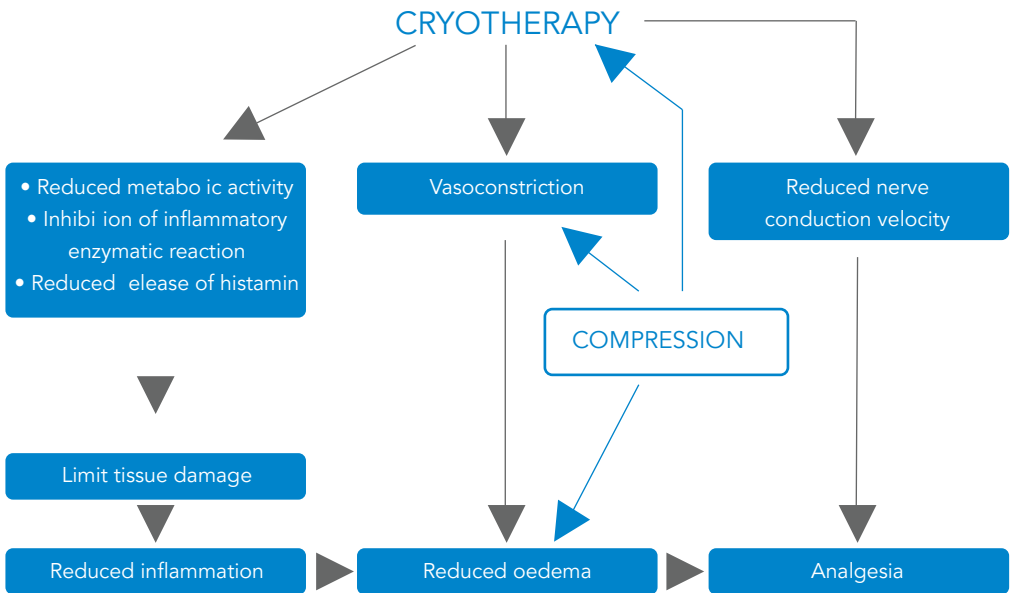


# CRYOTHERAPY BRACE

## with compression

### Benefits

The Cryotherapy Brace reduces inflammation, oedema and pain. That effect is enhanced when combined with compression.

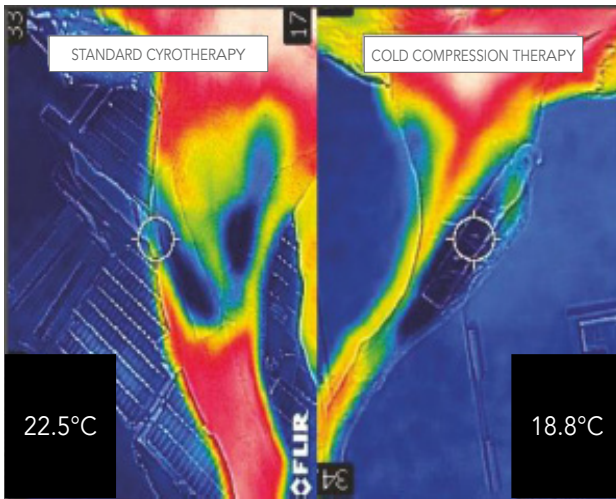


### Indications

The brace is designed for the stifle, but turned backwards, it can be used for other joints such as the elbow. Applications include elbow and stifle arthroscopy, arthrotomy, CCL and MLP surgery, fractures of the distal femur, proximal tibia or elbow, corrective osteotomies for angular limb deformities.

#### Comfortable for the dog and easy to apply

Apply for 10 - 20 minutes immediately post surgery, inflating the brace with 5-10 pumps. Repeat applications 2-3 times a day for the next 5 days.



“A recent meta-analysis showed that Cold Compression Therapy is superior to cryotherapy alone in the acute rehabilitation stages in people undergoing knee surgery. These improvements are thought to be due to more intensive contact of the cooling aggregate with the skin and the direct effects of compression.”\*

In dogs, when used post-operatively the brace provides...	24 hours after surgery	10 days after surgery	42 days after surgery
Significantly greater range of motion	✓		✓
Significantly lower Glasgow Pain Scale scores	✓		✓
Significantly improved degree of lameness		✓	✓

“The importance of rehabilitation and multimodal and pre-emptive analgesia after orthopaedic surgery has been recognised in veterinary medicine, and as such, treatment modalities without adverse effects are desirable.

Cold Compression Therapy represents such a modality, as confirmed by the present and previous studies.”\*

\*N. von Freeden et al. : Comparison of two cold compression therapy protocols after tibial plateau leveling osteotomy in dogs, Tierarztl Prax Ausg K Kleintiere Heimtiere 2017; 45(04): 226-233.

# Product Information



Size	Orientation	Code	Characteristics	
Small	LEFT RIGHT	ACGGS01 ACGDS01	Patient Weight: Brace Height Thigh Circumference:	16 - 25 kg 26 cm 31 cm
Medium	LEFT RIGHT	ACGGM01 ACGDM01	Patient Weight: Brace Height Thigh Circumference:	25-35 kg 28 cm 35 cm
Large	LEFT RIGHT	ACGGL01 ACGDL01	Patient Weight: Brace Height Thigh Circumference:	35-50 kg 30 cm 38 cm



Fourlimb *surgical solutions*

 [fourlimb.com.au](http://fourlimb.com.au)

 [support@fourlimb.com.au](mailto:support@fourlimb.com.au)

 +61 8 9590 885

