

## Applying the Dressing

- Cleanse wound according to institutional protocols.
- Debride all necrotic tissue including eschar and slough.
- Be certain the wound has achieved hemostasis.
- Visually examine and palpate wound bed to locate any blood vessels or delicate underlying structure in close proximity.
- Prepare area around wound to permit adhesion of the polyurethane drape.
- Take measurements of the wound dimensions and note wound type. Select the appropriate foam based on wound assessment. Cut the Cardinal Health™ NPWT foam dressing to a size that is appropriate for the wound (**Figure 1**). Document the number of foam pieces used to fill the wound.

**NOTE:** Do not trim the foam dressing over or around the wound site to help prevent debris from the foam dressing from falling into the wound (**Figure 2**).

- Place the Cardinal Health™ NPWT foam dressing in the wound site taking care to avoid contact with the peri-wound skin (**Figure 3**).

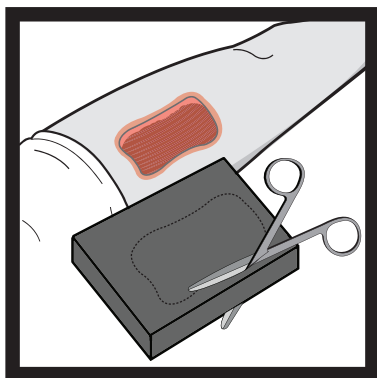


Figure 1



Figure 2

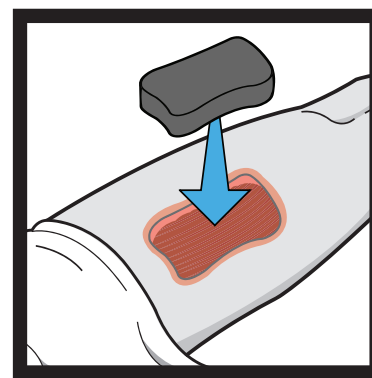


Figure 3

**WARNING:** Do not pack the Cardinal Health™ NPWT foam dressings into any areas of the wound. Forcing dressings in a compressed manner into any wound is contrary to approved protocols. Loosely fill all visible and invisible dead space in the wound.

**NOTE:** The Cardinal Health™ NPWT foam dressing should cover the entire wound base, including tunneling and undermining. However, the Cardinal Health™ NPWT foam dressing should not be in contact with intact skin.

- Size and trim the Cardinal Health™ Polyurethane Drape to cover dressing plus a 3-5 cm border of intact skin (extra pieces of drape can be used to seal dressing leaks) (**Figure 4**).
- Remove the drape's release liner starting with tab A (**Figure 5**). Invert and place over the Cardinal Health™ NPWT foam dressing and peri-wound (**Figure 6**) and continue removing the contact layer with tabs B and C (**Figures 7-8**). Remove the remaining perforated tab (**Figure 9**). Gently press drape material down around the wound site and over the Cardinal Health™ NPWT foam dressing to ensure dressing is properly sealed.

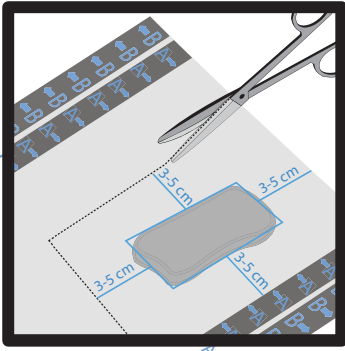


Figure 4

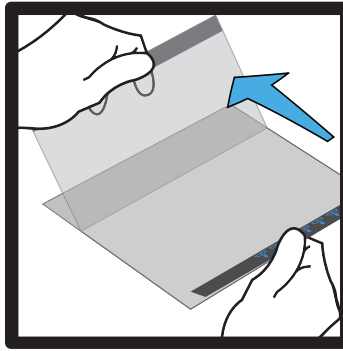


Figure 5

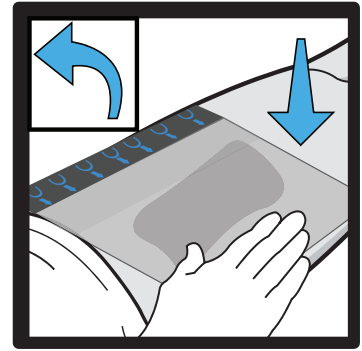


Figure 6

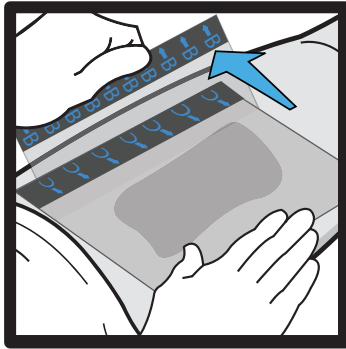


Figure 7

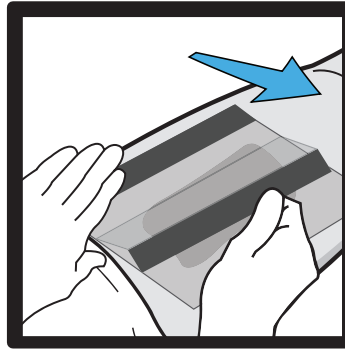


Figure 8



Figure 9

- Cut a 1 cm diameter hole in the top of the drape at a convenient location over the foam dressing by pinching and lifting the drape (**Figure 10**).
- Peel the backing from the SpeedConnect™ port and place it over the hole made in Step 10 (Figures 11-12). Using the tips of the fingers, press around the top of the SpeedConnect™ port to ensure a good seal to the dressing.
- Connect the distal end of the SpeedConnect™ tubing with the blue tapered connector to the open port of the Canister (Figure 13). Gently twist and push the connector on just enough to secure and seal it.

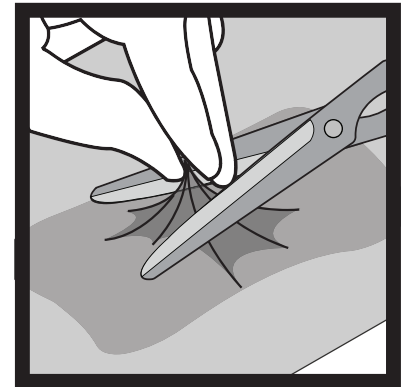


Figure 10

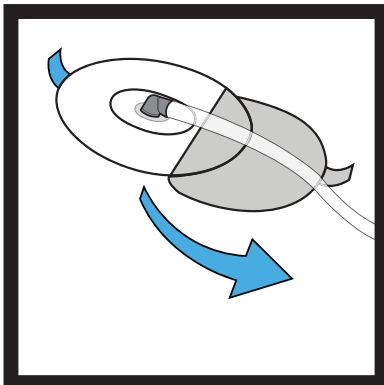


Figure 11

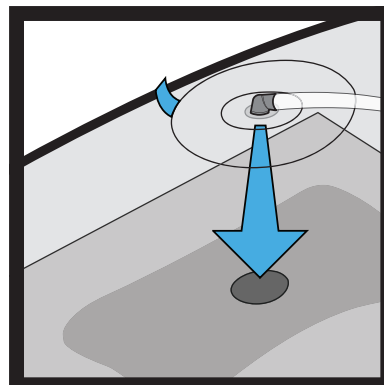


Figure 12

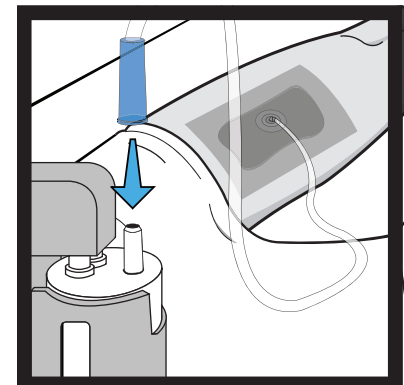


Figure 13